

MY CHAMELEON IS INSTALLED, WHAT NEXT?

A guide to soft-flashing your Chameleon BIOS, and installing a Dashboard...

(First, a big thank you to [Team Xodus](#) for an outstanding chip, and all the hard work they continue to devote to the scene. Second, I will take no responsibility for anything at all with what you do or how you do it. You mod at your own risk. I recommend you read this entire tutorial through at least once prior to beginning. Make sure you follow this guide explicitly. The suggestions I make are my personal preferences. If you prefer a different BIOS or Dashboard I really don't want to hear about it...I wrote this tutorial, not you. Finally, it worked for me, but that does not mean it will for you. If it does not work, you probably did something wrong.)

Section 1: Basic Definitions

In order to make and play backups of your games, ftp to your Xbox, install a larger hard drive, etc. with your Chameleon mod, you must first do several things. You have to replace the Cromwell Linux Clean BIOS 1.8 by flashing a new BIOS, and then you must install a dashboard to replace the MS Dashboard.

BIOS- By definition Basic Input/Output System. The Chameleon comes preloaded with a BIOS (Cromwell Linux Clean BIOS 1.8) that needs to be replaced. BIOS's come in varieties. However I recommend a newer BIOS such as X2 4977. I also recommend that you get one with a boot screen other than GREEN!!! This way there is NO question that it was properly installed.

Dashboard- The dashboard is the graphical front-end used to navigate your Xbox and hard drive. The stock M\$ Dashboard will not give you unbridled access to the hard drive, so it will need to be replaced. My personal preference in a dashboard is EvoX. While there is a BIOS called EvoX, most all references on message boards and websites to EvoX or EvolutionX refer to the dashboard. For this tutorial EvoX refers to the dashboard, as it is my dashboard of choice. There are others available such as Avalaunch.

Flash- (1) The act of opening your overcoat in front of someone while wearing nothing underneath, (2) The act of installing a NEW BIOS into your Chameleon.

Section 2: What You Need

Hardware:

XBox version 1.0-1.3 (properly attached to a TV)
Chameleon Mod Chip (properly installed)
PC with a CD or DVD burner
2 CDRW's (I know Memorex works fine)

PC Software:

CD/DVD burning software (Nero or RecordNow are the favored)
Software that can make an XISO (CraXion is the preferred method)

XBox Software:

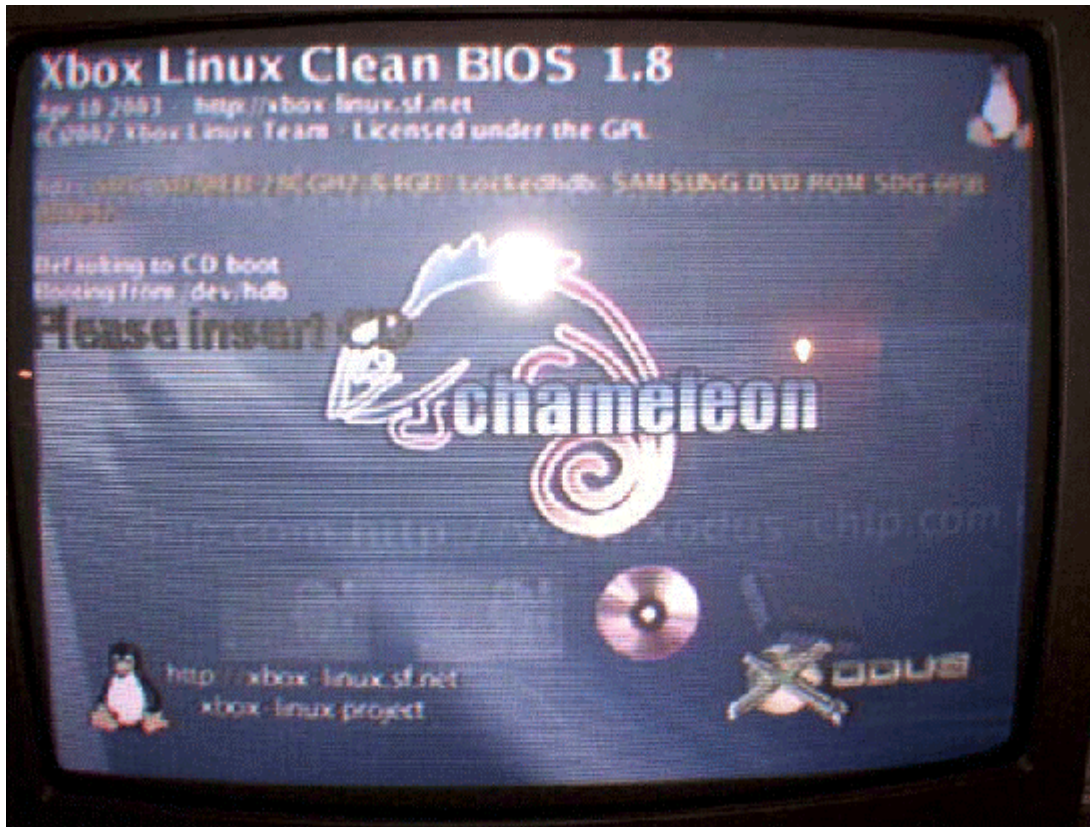
A new BIOS (I strongly recommend x2 4977, with a "colored" boot screen)
A new Dashboard (EvoX 1.8.3752 is my personal choice) OR...
Slayer's Auto Installer 2.1 (highly recommended)

This tutorial does not include how to setup EvoX or how to use Slayer's Auto Installer. There are TONS of EvoX tutorials available, so grab one, and Slayer's comes with a very concise ReadMe file.

If you are interested in finding ALL of the tools you are looking for, you should check the USUAL places! (<http://www.xbox-scene.com/articles/xbins.php>)

Section 3: Chameleon Installation

This tutorial assumes you have correctly installed your Chameleon chip. Correct installation is easy to verify. When you power up your XBox, you will see the blue light of the chip blinking, and this screen will appear on your TV set (fig 1):



NOTE: This screen will **ONLY** appear if you have your XBox connected with the **RCA/VIDEO** cable that came with your XBox. You will not see the screen while using a **VGA** or **HDTV** or any **third party** adapter. However you may still flash your BIOS (see **Section 5 Special Note** for details!)

Now that you know your chip is properly installed, it is time to flash your BIOS.

Section 4: Preparing a BIOS disk

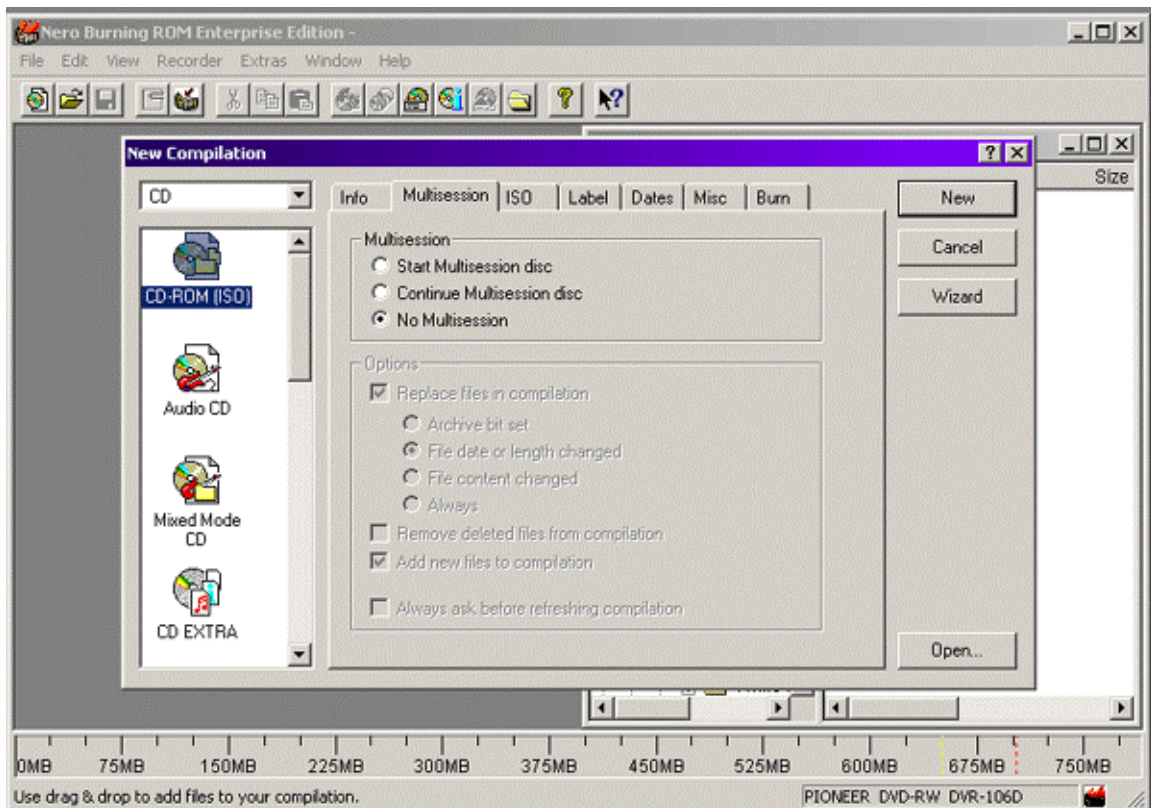
Once again make sure you have a current BIOS. At the current moment, since you are a beginner and not a developer, there is **NO NEED** to get a BIOS larger than 256k. The X2 4977 (Xecuter) has the latest media check patcher built in (no more game patching) and you can get one that has a "colored" boot screen (green...AND purple, red, blue, gray, orange, and dark blue). This aids in identifying a proper flash.

Your 256k BIOS when unzipped on your PC is probably named something like: X2_4977_256K.BIN. Make a new folder (call it XBIOS) and place this file into that folder. Once it is in that folder, rename the file to "LINUXBIO.BIN" (with no quotes, duh). Read that name again. **LINUXBIO.BIN**

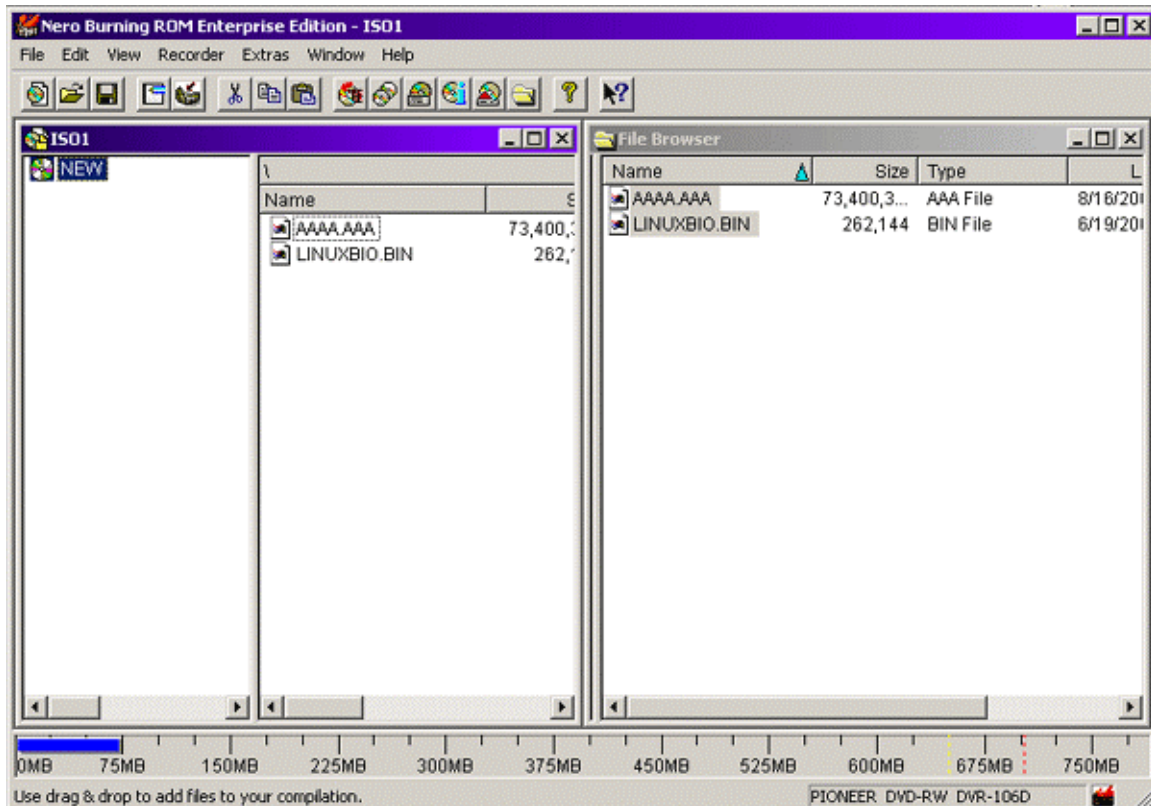
Now you MUST put a "dummy" or fake file in that same folder. It can be any file (.exe, .wav, etc.) but should be at LEAST 100mb in size. As a personal note, I zipped up two or three .wav files of songs to make a 102mb file. Once this file is in the same folder with LINUXBIO.BIN, you should rename the dummy file to "AAAA.AAA" (again, without the quotes). Don't ask why, just do it. (Actually it ensures that it is the first file seen on the CDRW therefore making it easier to find your LINUXBIO.BIN.)

At this point you should have a folder on your PC called XBIOS with two files in it (AAAA.AAA (100mb), and LINUXBIO.BIN (256k)).

Insert a new, blank CDRW (Memorex, right?) into your CD/DVD burner. Open your CD burning software. This guide/tutorial uses Nero. You should see this screen (fig. 2):



Choose to make a CD-ROM (ISO) also known as a data CD. This is the setting you might use to backup files from your hard drive of your PC or such. In this case we are merely going to burn two files to a CDRW. Under Multisession tab, make sure you choose NO Multisession. In configuring the burning (the ISO tab in Nero) you want to make this disc an ISO 9660 Level 1 Mode 1 disc, with Joliet OFF. Now it is time to add the files. From Nero's browser, find your folder (XBIOS) with your BIOS and dummy file. Drag these into your new ISO compilation. (See fig. 3):



Now choose to burn the CDRW. Make sure the session is closed, you are burning the CDRW at the slowest setting (to insure quality) and that you are burning DAO (Disk at Once). Once the CDRW is burned, it is now time to flash your BIOS.

Section 5: Flashing the BIOS

Power up your Xbox using the power button. Once the Xbox is on and the Linux screen appears (it is now a good time to refer back to fig. 1 to see what the screen should look like) the DVD tray should eject by itself. At this point do nothing. **NOTHING**. Sit still. Look at that screen for two minutes. Or look at the nice flashing blue light from the side of your Xbox, as this will be the last time you see it till you install a BIOS that implements the blue light (there is not one out as of the time of writing this guide). I am DEAD SERIOUS. You've got two minutes to waste. So just stare at the prompt for you to insert the CD. After two minutes, calmly insert the CDRW with your BIOS and dummy file burned on it into the Xbox DVD tray, and press the eject button to close it. Wait 30 seconds. Within this time you should get a message saying "Loading linuxboot.cfg from CDROM...".

Right around this time, your Xbox should power off. This is the first sign of a successful flash. But let's be sure. Power up your Xbox again by using the power button. You did use Xecuter's X2 4977 with a different color boot screen yes? If so, you should see something like fig. 4:



Special Note: *If you have your Xbox connected via VGA/HDTV or any third party RF connector, you will not see the Linux boot screen. However you may still install your BIOS. Follow the directions above, but without video. The **FLASHING BLUE LIGHT** on your Chameleon will let you know that the Cromwell BIOS booted up and is waiting for you to insert your new BIOS disk. Wait the two minutes of watching the blue light flash, and then insert your CDRW. Wait 30 seconds to 1 minute for your Xbox to power down.*

At this point, your Xbox should continue booting into the standard M\$ Dashboard. This means we need to install a NEW Dashboard!

Section 6: Determine your Dashboard

There are several things you can do. One of the easiest courses of action is to find Slayer's Auto Installer xISO, which includes all the major programs (file explorer, DVD and Media Player, and auto sets up your hard drive) and the current version of EvoX with a lot of nice "skins" for the front end. Many eXperienced users are against this as you are robbed of "learning" how to setup your own dashboard and configure your own software. I personally found Slayer's to be awesome, and viewing the preconfigured .ini files helped me learn a WHOLE lot about how EvoX works.

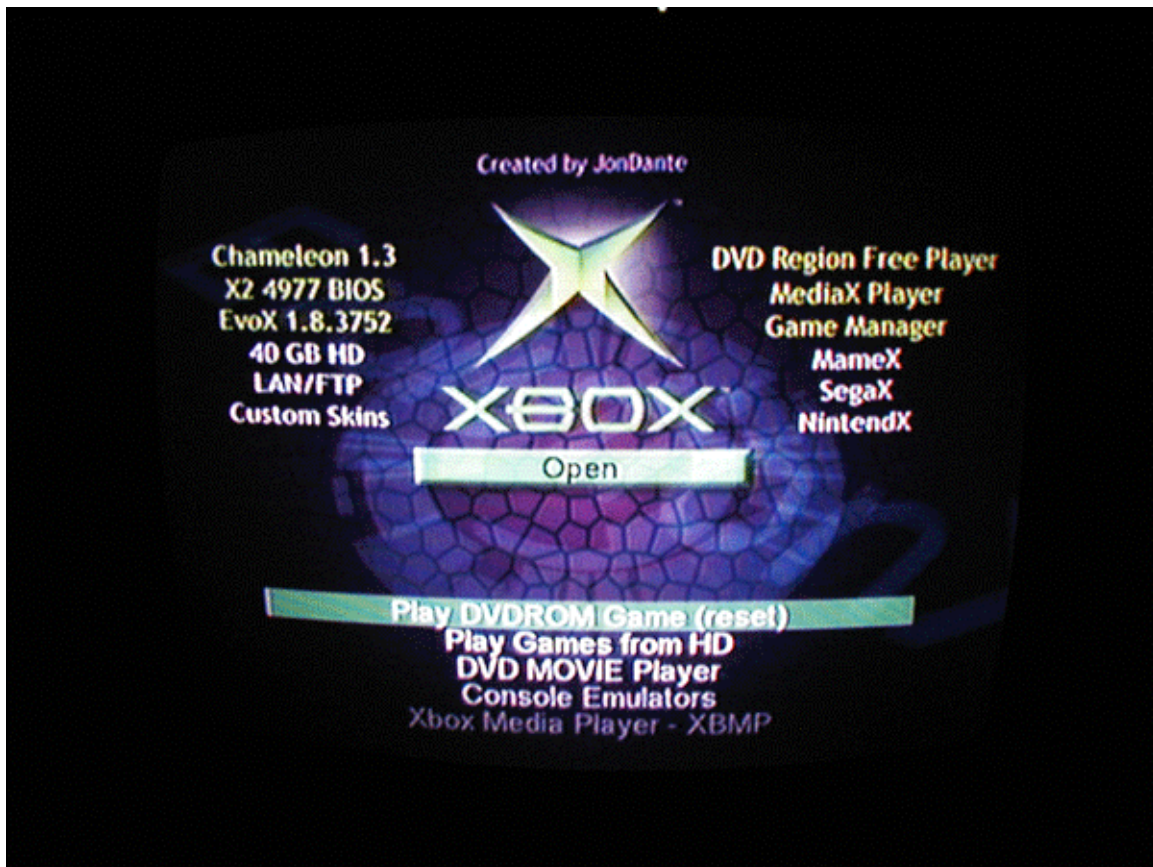
If you choose to go with making your own EvoX disk, there are tons of tutorials on setting up EvoX and the .ini file. I am not here to help or troubleshoot with the editing of files, or logging on via ftp. No matter what, you will need CraXion to make an XISO of your edited files. Xbox-Scene Forums has a wonderful pinned ReadMe of configuring EvoX with Chameleon.

Either way (Slayer's or personal EvoX) you will burn an image file...the ISO (which is an XISO) file onto a fresh CDRW. Using Nero you merely choose to burn an image and select either the Slayer's prefabbed ISO, or the XISO that you made yourself of EvoX. Make sure it is Disk at Once and you close the session.

Section 7: Last Step

Power up your XBox and insert the CDRW with the dashboard that you just created. Power down your XBox. After a few seconds, power your XBox back up. At this point you will again see the BIOS screen. After that you should see a NEW dashboard screen. If you chose to go with Slayer's, follow the included ReadMe file to finish the process of setting up your HD.

If you created an EvoX CDRW of your own, you might want to ftp into your box to backup the files that are there, and copy over your NEW dashboard from your CDRW.



Section 8 (obviously): Troubleshooting

If you had problems, you deserve a Section 8. However, let's look at some errors:

BIOS:

" Looking for linuxboot.cfg.. cant find it .. halting." Hmmmm...your CDRW is NOT being read by the DVD drive. This could be for several reasons. It did not burn correctly, or the media you chose is not readable by your XBox. Try different media, or try reburning the BIOS and dummy file. Follow the above procedures TO THE LETTER!

"Loading linuxboot.cfg from CDROM..." followed by a long pause with no shutdown. Did you wait the TWO minutes as I suggested? If so, try downloading or using a different BIOS, or re-download the same BIOS and reburn your disk. Make sure you do not change ANY of the factory settings on the chip.

Closing:

Who knows if this will help, but I believe this guide to be complete when it comes to soft-flashing your BIOS. It is a beginner's guide, and by no means begins to touch the full capabilities of the Chameleon. This guide is merely to get you up and running. I hope you found this helpful.

Best to all,

Jon Dante