



Xbox-Board Ultimate Boot CD v4.0 *Multilingual*

!!!Attention!!! !!! Attention!!! !!! Attention!!! !!! Attention!!!

The time of booting averages around 30 seconds to 1 minute after inserting the CD!!!!
(The screen will stay black during this time.)

Time of booting up to 1 minute!!!

It takes that long, because of the huge bilingual menu structure!!!!

!!! Attention!!! !!! Attention!!! !!! Attention!!! !!! Attention!!!

The CD shows the function possibilities of UnleashX.

The CD only works with a modified XBox!

The CD is for the installation of software and dashboards, for bug fixing or for Bios Flash.

!!!CD-Usage at one's own risk !!!

What do you find in this instruction?

- 1) How to burn the CD.
- 2) What is on the CD?
- 3) Menu structure and scale of functions.
- 4) FAQ (also short information. Please read!)

This document is written by exuser for www.xbox-board.de

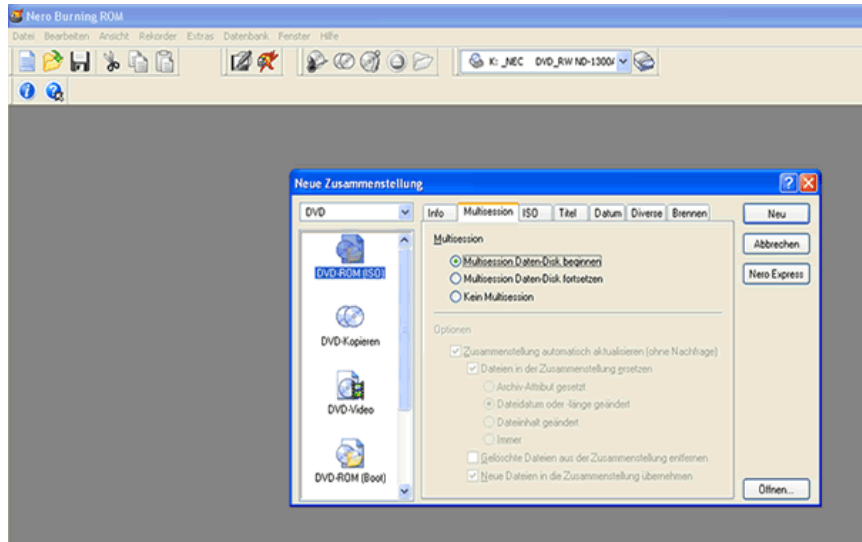
This document has a copyright ©

The CD is only provided for test purposes and must not be abused. The usage of modified XBoxes is everyones own discretionary and liability.

The CD originators and xbox-board.de assume no liability.

Burn the CD

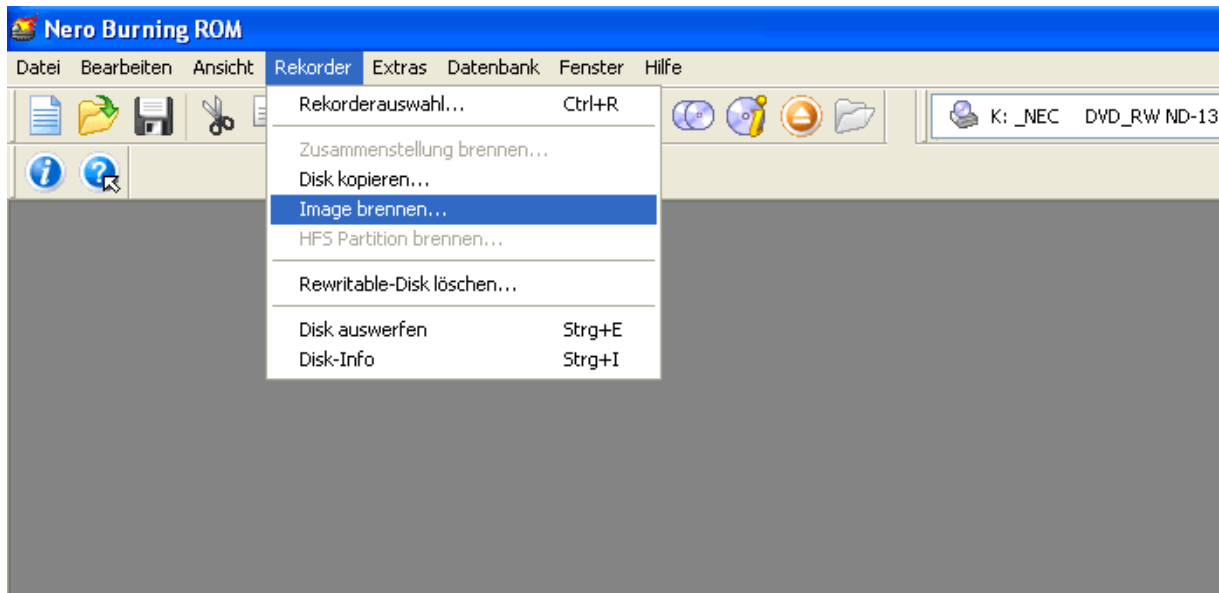
I'll explain the burning with Nero Version 6 and Nero SmartStart



Just click on
 „Abbrechen“!!!

This burning dialog isn't
 needed!

When you use Nero 6 just choose „Image Brennen“ in the menu „Rekorder“.
 With Nero 5.5 you will find this menu item under Datei → Image Brennen!!!!

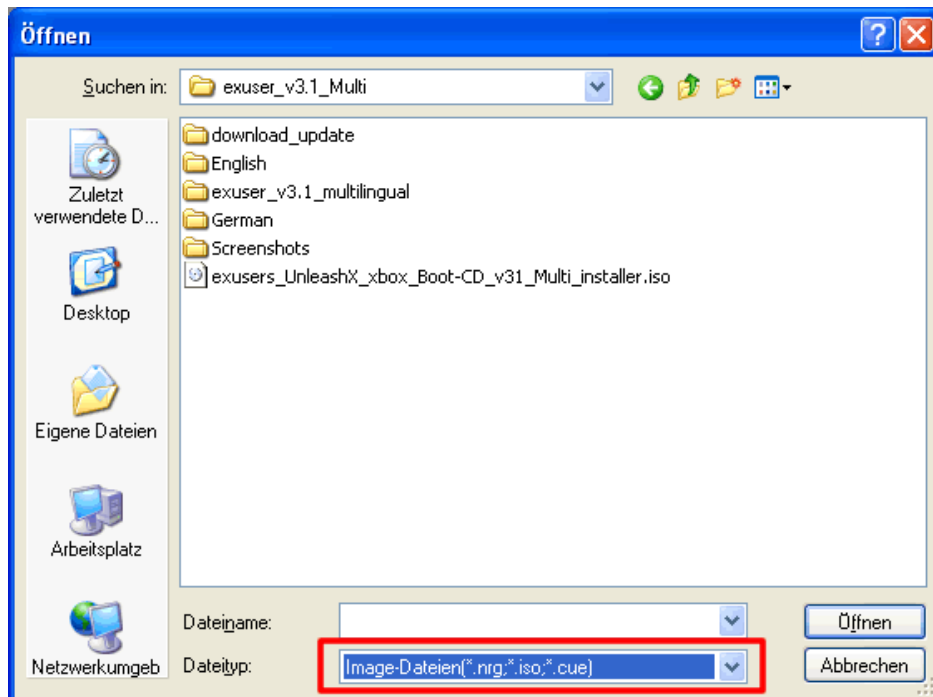


This document is written by exuser for www.xbox-board.de

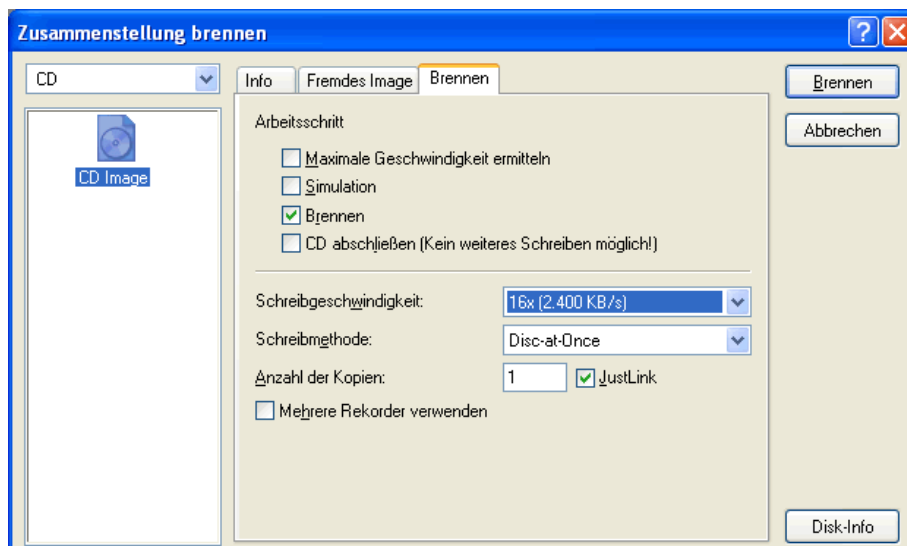
This document has a copyright ©

The CD is only provided for test purposes and must not be abused. The usage of modified
 Xboxes is everyone's own discretionary and liability.

The CD originators and xbox-board.de assume no liability.



Choose here the ISO-Image!



Now adjust the speed and start burning. ;)

If problems appear, adjust the printing speed to 4x burning. Test it again!

This document is written by exuser for www.xbox-board.de

This document has a copyright ©

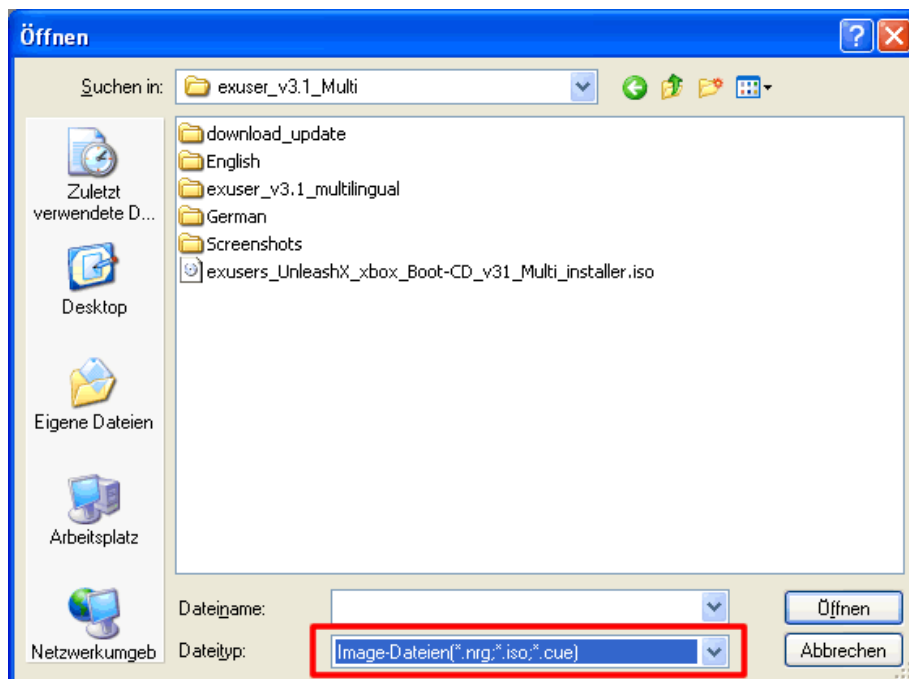
The CD is only provided for test purposes and must not be abused. The usage of modified Xboxes is everyones own discretionary and liability.

The CD originators and xbox-board.de assume no liability.

Burning with Nero SmartStart!



As you can see, just choose “Kopieren und Sichern“, then click on „Image auf Disk brennen“! A dialog will open!



With Nero SmartStart take care that you **change the file type to *.NRG *.ISO**. As shown on the picture!!!

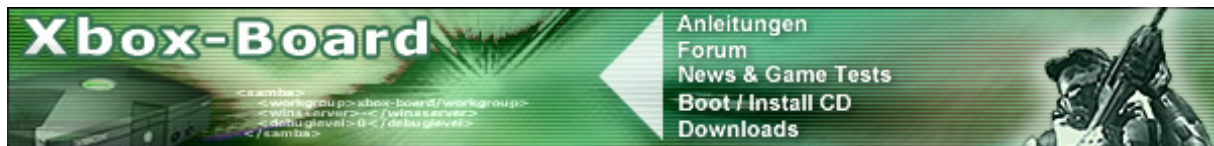
Adjust the speed in the following dialog and start burning. If problems appear, adjust the printing speed to 4x burning!!!!

This document is written by exuser for www.xbox-board.de

This document has a copyright ©

The CD is only provided for test purposes and must not be abused. The usage of modified Xboxes is everyones own discretionary and liability.

The CD originators and xbox-board.de assume no liability.



What is on the CD?

Dashboards:	Applications:	Games:
<ul style="list-style-type: none"> - UnleashX (0.37.1218A) - EvolutionX (Build 3935) - Avalaunch (0.49.3) - MS-Dash (185ead00) 	<ul style="list-style-type: none"> - XBMC (2005-01-07) - BiosChecker (5.0) - BoXplorer (0.96) - ComplexTools (1.6) - ConfigMagic - DVDX (v2.0) - dvd2xbox (0.6.1) - enigmahx - HDDLoader (1.3a) - Linksboks - XBFTP (0.61) - xbvdetector - XSelect (0.6) 	<ul style="list-style-type: none"> - X-Marbles - XBOMBERbox - SuperMarioWar - XBoxV1.1 - PacmanX_Beta1 - Miss DrillerX - bubble trouble sx - BreakoutX3Dv13
Emulators:	Sonstiges:	Extra:
<ul style="list-style-type: none"> - DegaBox (v1.201) - Dosxbox (v0.62) - Kawa-x (v0.11) - MAME-X (Beta 6) - NeoGenesis (v15) - Pcsxbox (v13) - Surreal64-xxx (02/01/2005) - uaex (0.8.22) - vice64x (v4) - xSnes9x (v.1.42) - xboxadvance (v17) 		

This document is written by exuser for www.xbox-board.de

This document has a copyright ©

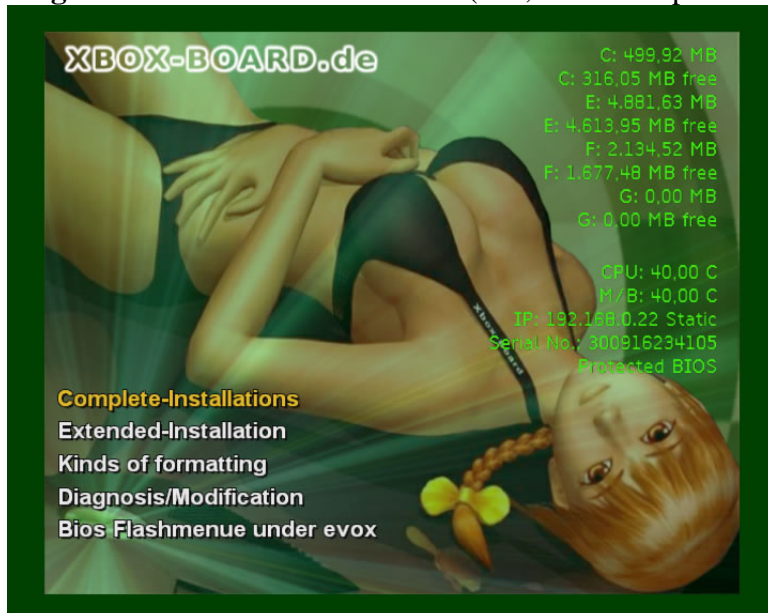
The CD is only provided for test purposes and must not be abused. The usage of modified Xboxes is everyones own discretionary and liability.

The CD originators and xbox-board.de assume no liability.



Menu structure

The CD structure is very simple. There are two **installation-menus**, one **format-menu**, a **diagnostic-menu** and a flash menu (this, I won't explain here).



Menu one **Complete-Installation-Menu:**



Here you can execute standard installations. Everything is installed, which is available on the CD. That is everything, which is listed in the software table ;-)

All dashboards are installed, which can be started later while booting through pressing the **A,B and X** button!

A on Controller or 1 with remote control: Avalaunch
 B on Controller or 2 with remote control: EvolutionX
 X on Controller or 3 with remote control: XBMC

This document is written by exuser for www.xbox-board.de

This document has a copyright ©

The CD is only provided for test purposes and must not be abused. The usage of modified Xboxes is everyones own discretionary and liability.

The CD originators and xbox-board.de assume no liability.



HD Installation 8 GB:

This installation routine is applicable for original Xbox-hard discs, which are **NOT** 10 GB hard discs. What will happen, or won't happen?

The complete software package is installed.

Drive F: isn't formatted.

Drive C: is installed with the updated MS-Dash and the standard dashboard is UnleashX.

A sub folder called Dash is created on C: with Avalaunch, EvolutionX and additional skins. (the

skins are chosen by **LAN-S**)

You can start Avalaunch and EvolutionX with the fast boot buttons, as described above!

Now you have all important tools and emulators with Roms and Bios!

The updated XBMC is also included with full functions and modified by MikeX.

The special functions will be explained later in this instruction manual.

Furthermore you will find some nice Homebrew Games ;)

So, have fun with the 8 GB installation!

HD Installation over 10 GB without G:

This menu can be used for hard discs and original Xbox-hard discs, which are 10 GB big, mostly from Seagate.

The complete software package is installed.

1) Standard Installation

Drive C: is installed with the updated MS-Dash and the standard dashboard is UnleashX. A sub folder called Dash is created on C: with Avalaunch, EvolutionX and additional skins. (the skins are chosen by **LAN-S**)

You can start Avalaunch and EvolutionX with the fast boot buttons, as described above!

Now you have all important tools and emulators with Roms and Bios!

The updated XBMC is also included with full functions and modified by MikeX.

The special functions will be explained later in this instruction manual.

Furthermore you will find some nice Homebrew Games ;)

2) Live Installation (everything on F:)

Also here everything will install, ;-)

with the difference, that the dashboard and the programs on F: are saved. Now you will have less problems with Live Games and one chance more, that the box won't be locked by Microsoft!

!!! Attention !!!

A bios must be installed, which can start the evoxdash.xbe from F:

You will find this versions also on the disc under "Flash with Evox".

This document is written by exuser for www.xbox-board.de

This document has a copyright ©

The CD is only provided for test purposes and must not be abused. The usage of modified Xboxes is everyones own discretionary and liability.

The CD originators and xbox-board.de assume no liability.



HD Installation over 160 GB with G:

This menu is designed for big hard discs over 160 GB, which also have a drive G:. There are big hard discs, which assigned the complete memory on F:. Please choose the installation over 10 GB in this case.

1) Standard Installation

Drive C: is installed with the updated MS-Dash and the standard dashboard is UnleashX. A sub folder called Dash is created on C: with Avalaunch, EvolutionX and additional skins. (the skins are chosen by **LAN-S**)
You can start Avalaunch and EvolutionX with the fast boot buttons, as described above!
Now you have all important tools and emulators with Roms and Bios!
The updated XBMC is also included with full functions and modified by MikeX.
The special functions will be explained later in this instruction manual.
Furthermore you will find some nice Homebrew Games ;)

2) Live Installation (everything on F:)

Also here everything will install, ;-)
with the difference, that the dashboard and the programs on F: are saved. Now you will have less problems with Live Games and one chance more, that the box won't be locked by Microsoft!

!!! Attention !!!

A bios must be installed, which can start the evoxdash.xbe from F:
You will find this versions also on the disc under "Flash with Evox".

This document is written by exuser for www.xbox-board.de

This document has a copyright ©

The CD is only provided for test purposes and must not be abused. The usage of modified Xboxes is everyones own discretionary and liability.

The CD originators and xbox-board.de assume no liability.



Extended:

The single items will be explained later. Here you will find the meaning of this menu. ;-)

!!!Essential to read!!!



This CD menu is unique. You can create your own system, just as you like.

What does that mean?

An example.....

I would like to have a system without games and no-frills, only with tools, which are needed and Evox as the standard dashboard!

For that you choose the menu "Extended Installation" and there the first item "Format"!
(Attention! Make a backup in advance!)

Then you have to install the last item in the menu "Install MS-Dashboard".
After that you choose under the item "Dashboard Install/Update" the item "EvolutionX".
Decide which drive it should be installed on, e.g. C:.
Now the system is ready!

If you would like to install one or two applications extra, it won't be a problem!
Click on "Extended Installation" and install the Apps separately, e.g. choose Apps on E: and install "ConfigMagic".

So, we can boot from the box and look up, if the application is available on the box.

This is only an example, you can suspect how many possibilities arise with this CD.



This document is written by exuser for www.xbox-board.de

This document has a copyright ©

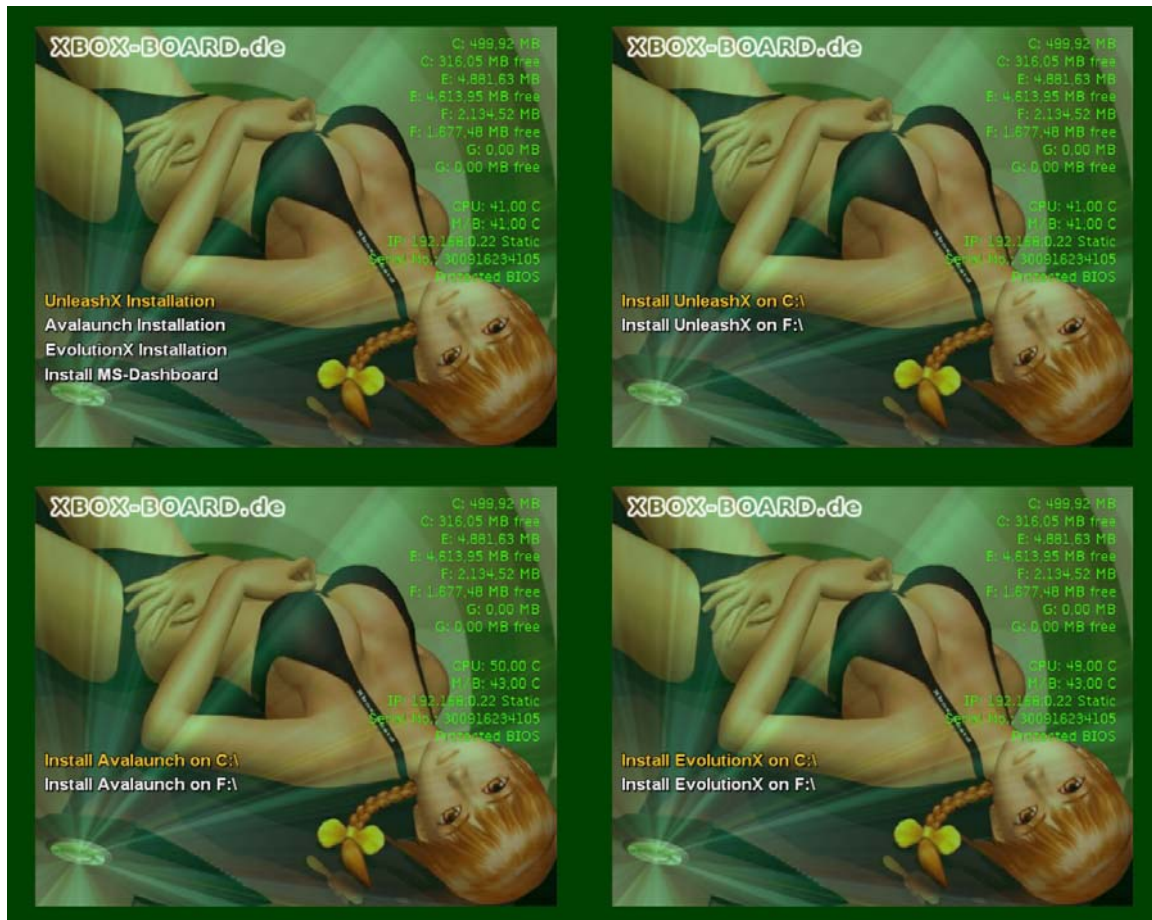
The CD is only provided for test purposes and must not be abused. The usage of modified Xboxes is everyones own discretionary and liability.

The CD originators and xbox-board.de assume no liability.

Factory setting:

The box is formatted completely and shift to the factory setting!
This means, that only the original MS-Dash is installed, nothing else!
Ingenious, if you want to sell the Xbox. ;-)

Dashboard Installation/Update



Here you can install single dashboards!
If you don't want UnleashX as your standard dash, you can install Avalaunch or Evox easily.
Just ingenious, freedom for everyone!

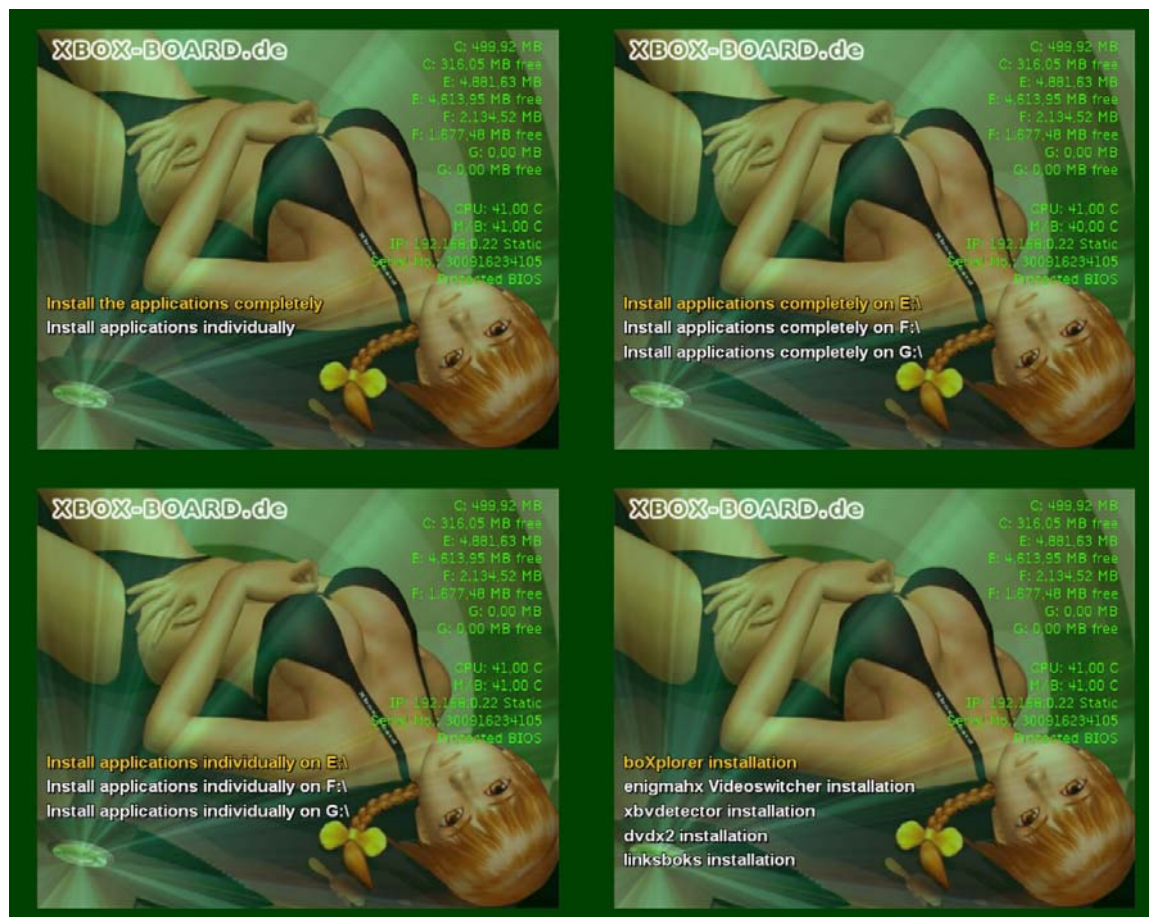
This document is written by exuser for www.xbox-board.de

This document has a copyright ©

The CD is only provided for test purposes and must not be abused. The usage of modified Xboxes is everyones own discretionary and liability.

The CD originators and xbox-board.de assume no liability.

Applications Install/Update



Here you have the possibility to install single applications or complete everything, as you like. The advantage is, you can create your own system and choose exactly which software your box has to have or not.

You are totally independent from the complete installation ;-)

„Independent“, this is the keyword for this CD. Install what and how you want it. ;-))☺☺

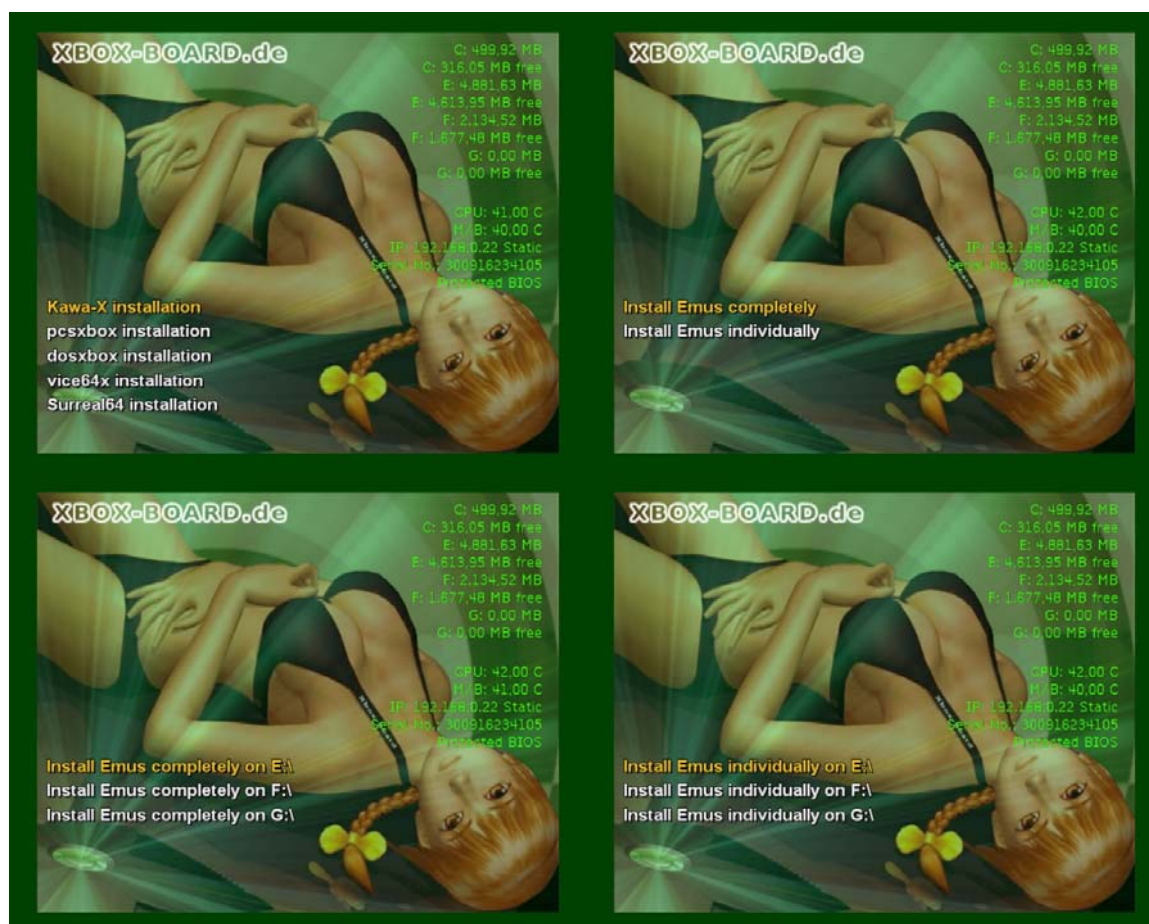
This document is written by exuser for www.xbox-board.de

This document has a copyright ©

The CD is only provided for test purposes and must not be abused. The usage of modified Xboxes is everyones own discretionary and liability.

The CD originators and xbox-board.de assume no liability.

Emus Install/Update



The same as in the applications!

You have the possibility to install all emulators on one drive, e.g. E: or F: or to install single emulators on the drives, everything through clicking.....

Again I have to say, that you can easily create your box and choose which emulators shall be installed ;-)

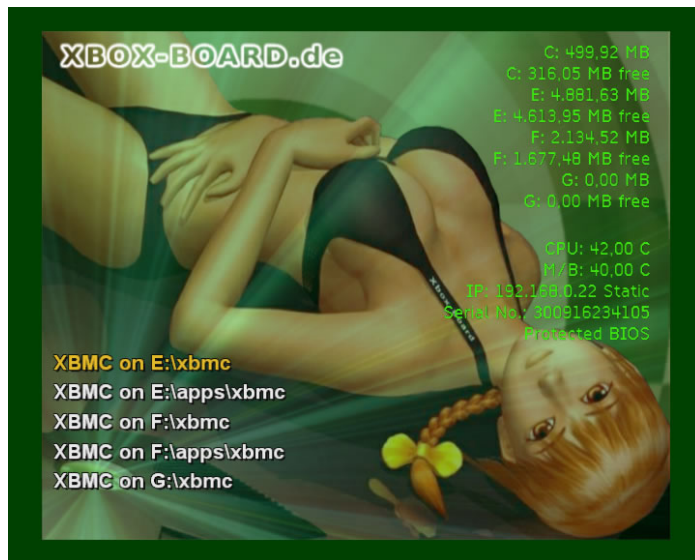
This document is written by exuser for www.xbox-board.de

This document has a copyright ©

The CD is only provided for test purposes and must not be abused. The usage of modified Xboxes is everyones own discretionary and liability.

The CD originators and xbox-board.de assume no liability.

XBMC Install/Update



Finally you will find here the single installation of XBMC! (XBox Media Center)

You can choose, if the XBMC shall be under Apps or in the main directory.

The XBMC is totally flossy with a lot of extra features and additional scripts ;)

More you will find under program info...

Delete the Profiles!

It is important to delete the profiles, when you want to replace your old XBMC.

You can get troubles with your old profiles. Therefore you can delete your old XBMC profile manually. ;-)

Kinds of Formatting:



This is a normal formatting module. Don't be scared, when you affirm it. There will be a query first. (Are you sure?)

You should choose this menu, when you already saved everything and want to install through the Extend-Menu..

This document is written by exuser for www.xbox-board.de

This document has a copyright ©

The CD is only provided for test purposes and must not be abused. The usage of modified Xboxes is everyones own discretionary and liability.

The CD originators and xbox-board.de assume no liability.



Diagnosis/Modification

Here you can start different applications.

BiosChecker:

With this program, which you can start from CD, you can check which Bios is on the chip!
The updated bios.ini is included.

But it is possible, that new Bios versions are issued in the meantime and thus can't be identified.

In this case you will see "Unkown", but don't be scared. Then you know that your Bios is updated enough ;-)

XBox Versions Detector:

This program isn't fully developed and doesn't work always as it should. Nevertheless it is very useful. Test it!

ConfigMagic:

The ultimative program to lock/unlock the hard disc or to create backups from ROM and more.....

Bios Flash Menü unter Evox:

Evos is started. You can choose and flash a bios without ruffle.

BUT it's not possible with every chip. E.g. Smartxx, Xecuter 3 or Xenium have this extra Bios (OS) versions.

You will also find them on the CD under BIOS!

In this case please flash over your modchip menu ;-)

This document is written by exuser for www.xbox-board.de

This document has a copyright ©

The CD is only provided for test purposes and must not be abused. The usage of modified Xboxes is everyones own discretionary and liability.

The CD originators and xbox-board.de assume no liability.



FAQ:

Which IP has my Box got with the CD CD?

The 192.168.0.22 Gateway is 192.168.0.201

The CD is inserted and started. Why can't I connect via?

Adjust your PC IP on the same sector, e.g. 192.168.0.10 SubnetMask: 255.255.255.0

User: xbox

Password: xbox

The Box stays black after inserting the CD.

Wait, it takes time until the menu appears. The configuration data is very huge and it takes time until it is memorized

With my Samsung DVD it takes up to 1 minute.

Which XBox version do I have?

Here you will find it: <http://www.xbox-scene.com/versions.php>

Which DVD drive do I have?

Here you will find it: <http://www.xbox-board.de/wbb2/thread.php?threadid=1260>

How can I make a backup of my XBox?

Create a connection between your PC via FTP and your Xbox. Copy all files on your PC.

Which CD/RW's are good?

Unfortunately I have to say, that it depends on the DVD drive!

Until now Platinum and Verbatim ran very good!

(Blanks also run on a Samsung drive)

What is a dashboard?

A user interface as a replacement or an accessory to the MS-Dash. From there you can start applications, set IP, and so on

Nothing works. What can I do?

Visit our board under www.xbox-board.de Please no questions to Roms for Emus

We would be happy about a feedback!!!

Thank you to:

Xbox-scene, xbins, Unleashx, Avalaunch Team XBMC Developers and to all others. ;-)

This document is written by exuser for www.xbox-board.de

This document has a copyright ©

The CD is only provided for test purposes and must not be abused. The usage of modified Xboxes is everyones own discretionary and liability.

The CD originators and xbox-board.de assume no liability.