

**X3IR**

# **Programming Instructions**

**V2.0**

## Contents

1. Hardware Installation
2. Software Usage
3. Learning Mode

### 1. Hardware Installation

- 1) It is recommended that you disconnect power to the XBOX while programming the X3IR
- 2) Connect the X3IR Programmer to the PC
- 3) Enable programming mode. Slide the switch on the programmer to the position away from the white connector, down on the picture below.

Enable



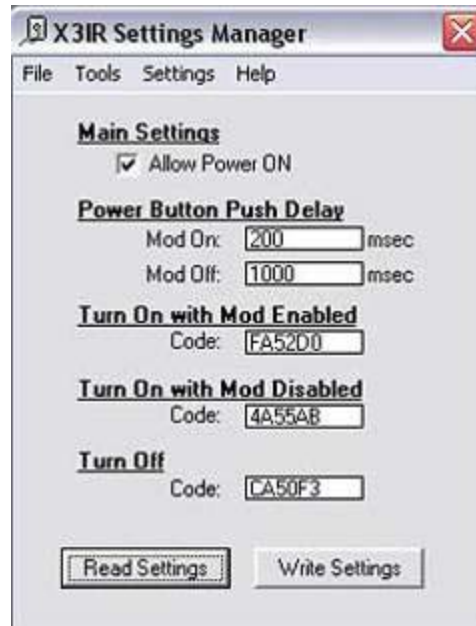
Disable



- 4) X3IR Is ready to be programmed with new settings.
- 5) When programming is complete, disable programming mode by moving the switch back to the Disable position.
- 6) Reconnect power to the Xbox.

## 2. Software Usage

1) Load up the X3IR Settings Manager



2) Click on 'Read Settings' to load the information that is in the X3IR



3) Edit any/all fields that you would like. Learning of IR Signals is explained in Section 3

4) Once editing is complete, click on 'Write Settings'. This will save all the settings to the X3IR.



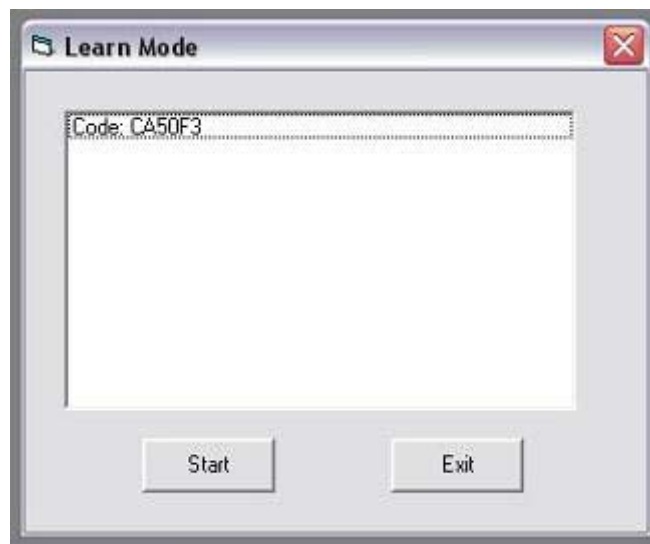
5) Programming is now complete, disconnect the programmer from the PC and disable programming mode (see Section 1)

### **3. Learning Mode**

This feature allows you to easily learn new button presses from different remotes, such as a universal remote.

Note: Make sure the X3IR programmer is connected to the X3IR and PC and the programming switch is set to enable, as well, the X3IR Programming Software has been loaded. Don't forget to 'Read Settings' before you do any changes to the settings, so that you will be working with the settings that are in the X3IR currently.

1) Select Tools -> Learn Mode. A new window should appear



3) Click on 'Start'

4) Aiming the remote at the X3IR's IR receiver, press the button you wish the X3IR to learn. If the button code is recognized properly, the code for that button will be displayed.

Sometimes a code may be displayed that due to some difference in timing, will be incorrect, therefore it is recommended you press the button a few times with at least a 2 second interval in between presses. Repeat until the code stays the same for the button on the remote.

5) Write down all the button codes you want to use.  
Click on 'Done'. Click on 'Exit'

6) Now back at the main window, enter the codes from #4/5 into the box for the setting you would like to change. (Remember to 'Read Settings' before you make any changes so that you are working with the settings that are in the X3IR)

7) Learning is complete. Continue with Section 2 above.  
Don't forget to write the settings back to the X3IR.